

The only submersible pump with no mechanical seals, no wear plates and no internal friction.

Features

- Very High Flow Rates
- High Vertical Head Pressure
- Self Priming
- Run Dry Technology
- Variable Speed & Flow
- Small Portable Size
- Advanced Metallurgy
- NO Mechanical Seals
- NO Internal Friction
- Low Maintenance Design
- Twin Shaft Bearings for Long Life
- Designed for Solids & Slurry Jobs
- No shaft couplings, fewer parts
- Larger 1.5" Shaft with 17.4 material upgrade



Model FF-4D-SM

Fast Flow's patented double suction technology produces superior flow rates and high head pressures. It is the only line of submersible pumps with no mechanical seals and no internal friction allowing the pump to run dry or cavitate. The high efficiency hydraulic motors have several advantages over electric submersibles.

Competitive Advantages

- Heat treated cast pump housing for long life
- Lighter than other submersible pumps
- Aluminum or stainless steel frame available
- Cost effective compared to other pumps
- Simple design allows for easy servicing
- Field service in under an hour
- Pumps 100 barrels of 15lbs (6k) drill mud in 9 min
- Easily field repairable by any mechanic
- Minimizes costly pump repairs
- Anti-clog double suction technology
- Pumps heavy oilfield drill mud & solids

Fast Facts

Weight:	131lb (59kg)
Max Water Flow:	1000GPM (227m ³ /h)
Max Vertical Head:	195 Feet (59m)
Operating PSI:	2000-3000 PSI (138-206 Bar)
Hydraulic Flow:	4 to 30 GPM (15-113lpm)
Power Source:	Hydraulic Driven
Material:	Ductile Iron
Discharge:	4" Male Cam Lock
Dimensions:	22"x17"x15"(55cm x 43cm x 38cm)
Hydraulic Oil:	AW-32 or AW-46
Frame:	316 L, 1/4" Plates

USPTO # 8,152,443 • 7,442,003 • 6,942,448 • 10,138,891

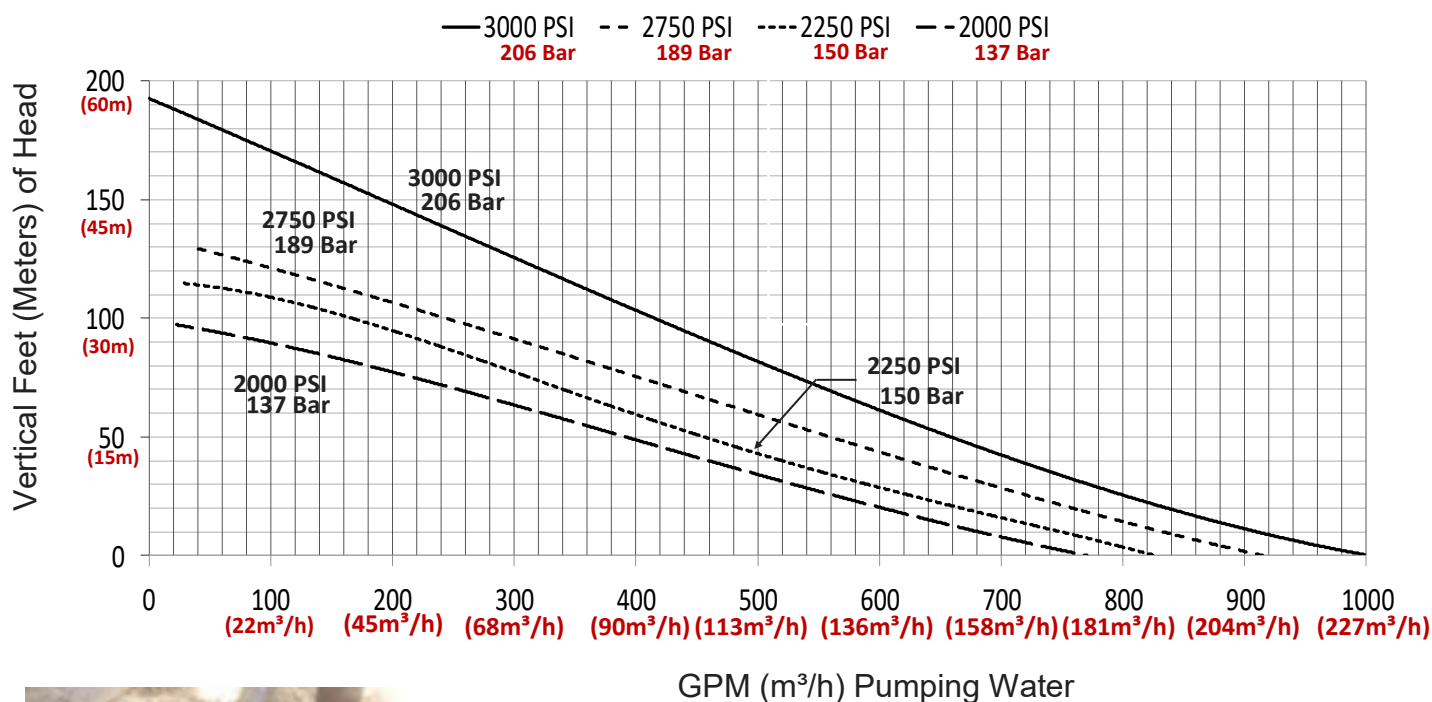
FastFlowPumps.com

9700 Hwy 63 • Moss Point, MS 39562

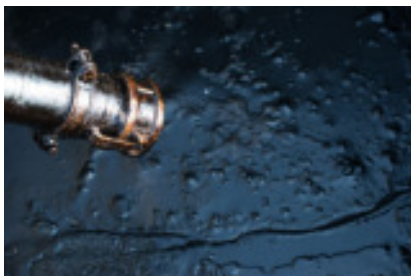
228.475.2468

Fast Flow Applications

4" Ductile Iron Compression Shaft SS Pump Curve



**OIL WELL CELLAR
PUMPING**



Applications

Drill rig well cellar pumping

Solids slurry pumping

Refinery tank clean out

Heavy solids pumping

Oilfield applications

Disaster response

Reserve pit pumping

Oil spill clean up

Barge pumping

Sewage pumping

Irrigation systems

Salvage jetting and pumping

Agriculture pond pumping

Coal mine pumping

Frac tank cleaning

Heavy crude pumping

Paraffin crude pumping

Diesel and jet fuel pumping

Oil well blowout cleanup

Drill mud mixing/ pumping

Water pumping

Charge pump

Vacuum truck assist

Fly ash pumping

Pit dewatering

Directional drilling

Construction dewatering

Floodwater abatement

Utility break locations

Vessel dewatering