

127 HP Diesel Hydraulic Power Unit

Fast Facts

Refinery, Chem & Power Plant Ready

Horsepower:
127 HP (94 kW)

Operating Pressure:
2500 to 4000 PSI (172-275 Bar)

Hydraulic Flow
0 to 52 GPM (Up to 196 LPM)

Hydraulic Tank
120 Gal (454 Liters)

Diesel Tank
120 Gal (454 Liters)

Weight:
5500 LBS (2495 kg)

Dimensions:
96"x56"x72" (243cmx142cmx182cm)

Hydraulic Oil:
32 or 46 AW, BIO, NS



127 HP DIESEL HPU

FEATURES

Engine

- Isuzu, Yanmar, or JCB
- EPA rated engine with rubber engine shock points
- LOFA or Murphy engine monitoring system
- Engine safety shutdown package
- Double fuel and hydraulic filtration
- Air inlet emergency shutdown valve
- Electric start with battery & weather safe battery box

Hydraulics

- Single or twin circuit hydraulic flow controls
- Low level hydraulic fluid shutdown
- Best in class 12 volt dual fan hydraulic cooling unit
- Hydraulic oil filter with spin on cartridges
- 100% oil spill and fuel spill twin containment
- 5000 PSI hydraulic gauges
- Screw together 1" dripless couplings
- Hydraulic oil level & temperature indicators

Available Options

- Fully custom hydraulic circuits, pressures, and flow
- Air or electric start; mechanical or electric shutdown
- Optional offshore/oilfield certifications
- Integrated hydraulic hose reels
- Optional hydraulic pressure washers

Safety

- Low point drain plugs & tank isolation valves
- Custom radiator grill guard, overhead grating protection
- Variable pressure hydraulic relief valve
- Safety transport binder "O" rings
- Easy to read safety and operation labeling
- Flame arrestor exhaust with heat shield
- Emergency engine over speed shutdown

Other Features

- Optional hydraulic hose reels & tool box compartment
- Double coated marine epoxy or powder coat finish
- Fully boxed frame tubing for added strength
- Top tank desiccant breather
- Removable tanks with oversized clean out ports
- Vertical tanks with clean-out for easy maintenance
- New 4" x 10" box tube skid rails & 10" forklift boots
- Center Point Lift, Safety o ring transport rings

Trailer or Skid Mounting Available

Fast Flow - Hydraulic Power Units

Fast Flow's Hydraulic Power Units are designed to be functional and well built. Intelligent class-leading features come standard in each unit. Fast Flow's unique approach to fluid management is designed to prevent spills while vastly improving serviceability. Each diesel and hydraulic tank is designed to be modular with oversized clean out and isolation valves for easy maintenance. Other manufacturers feature tanks made into the skid frame or lack spill containment entirely, making the end user at risk for costly hazmat clean up and EPA or DOT fines. Fast Flow hydraulic power units are able to operate with a number of hydraulic fluids including anti-wear, biodegradable and no sheen oil.

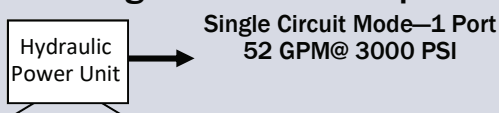
127 HP Diesel Hydraulic Power Unit

Operates any of 8 Fast Flow Pumps



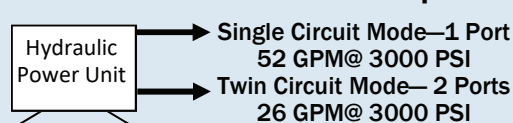
Hydraulic Output Options

Single Circuit - 1 Output



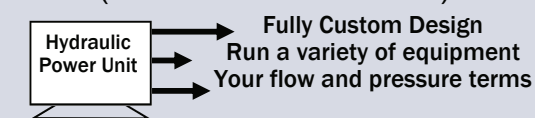
Power any Fast Flow Pump head

Twin Circuit - 1 or 2 Outputs



Twin circuits powers 2" & 3" Fast Flow Pumps

Multi-Circuit Custom Circuits (Diesel or Electric Available)



Power the Fast Flow Pumps you need plus operate auxiliary tools and equipment

Keeping it Cool.

Fast Flow power units have oversized hydraulic cooling systems that help handle the heat generated by heavy operating conditions, constant running and high ambient temperatures.

127 ISUZU 4JJ1X

- Turbocharged Diesel
- 4 Cylinder Liquid Cooled
- (127HP / 94 KW) Output
- 3.0 (L) Displacement
- 2400 Max RPM



Engine Performance Curve

