

FAST FLOW PUMPS

4" Chromium Twin Motor Pump

Fast Facts

- 210 lbs / 95 kg
- 1150 GPM / 4353 LPM Water Flow
- 185 ft / 56 meters Vertical Head
- 1500-3000 PSI / 103-206 Bar
- 8-28 GPM / 30-106 LPM Hydraulic Flow
- 4" Male Camlock
- 28" x 15" x 17" / 71 cm x 38cm x 43cm
- AW-32 or AW-46 Hydraulic Fluid



4" CHROMIUM
TWIN MOTOR PUMP

More Information

Features

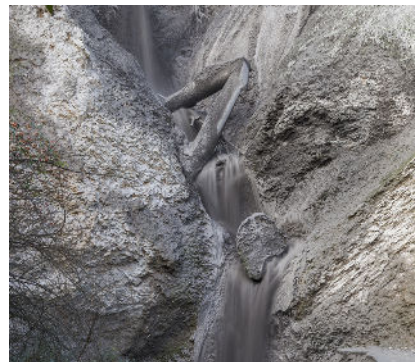
- Very High Flow Rates
- High Vertical Head Pressure
- Self Priming
- Run Dry Technology
- Variable Speed & Flow
- Small Portable Size
- Heavy Solids Pump
- NO Internal Friction
- NO Mechanical Seals

Competitive Advantages

- Designed for severe service applications
- Handles abrasive solids pumping applications
- Pump 20lb (9kg) per gallon (3L) oilfield slurries
- Anti-clog twin motor, double suction technology
- Durable ductile iron for long life
- Flame Spray coatings available
- Cost effective compared to other pumps
- Field service in under an hour

The Fast Flow 4" twin motor chromium slurry pump is designed to pump abrasive solids. The pump is crafted with 27% chromium, which enhances its suitability for more abrasive applications. Chromium's high hardness and corrosion resistance make it ideal for handling harsh materials, extending the pump's lifespan. The pump's robust construction allows it to handle the toughest conditions.

Applications



- Oilfield applications
- Solids slurry pumping
- Papermill Pulp
- Black Liquor
- White Liquor
- Barge pumping
- Oil storage maintenance
- Heavy crude pumping
- Refinery tank cleaning

